

PQ Power Switchmode Transformers

Features:

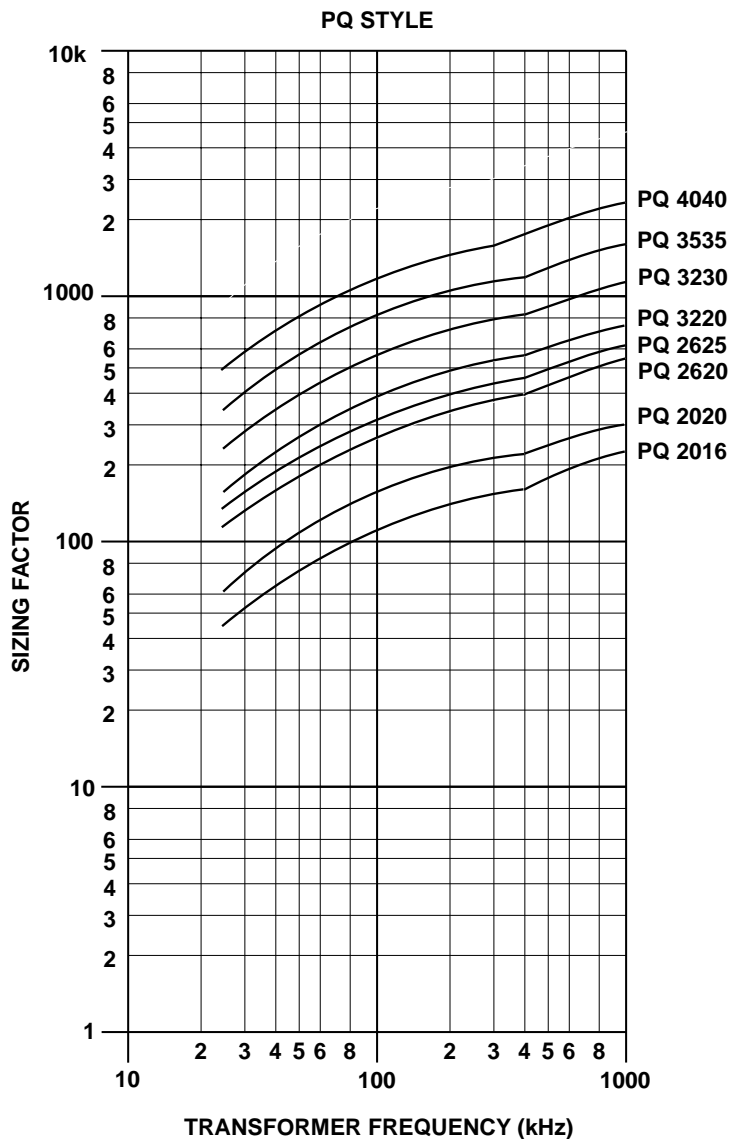
- High power density/volume
- Small footprint
- Good for gapped or ungapped applications
- Less ideal for applications involving IEC

Preferred Parts:

- PQSPXXXX are preferred (side pin configuration gives best reliability and manufacturability).

How to choose your model:

- Use the “sizing factor” previously calculated and the frequency to locate a point on the chart.
- Choose the model # whose line is above the located point.
- Note: During the design process, the actual sizing factor may vary from the assumptions used here.



PQ Power Switchmode Transformers

Figure 1:

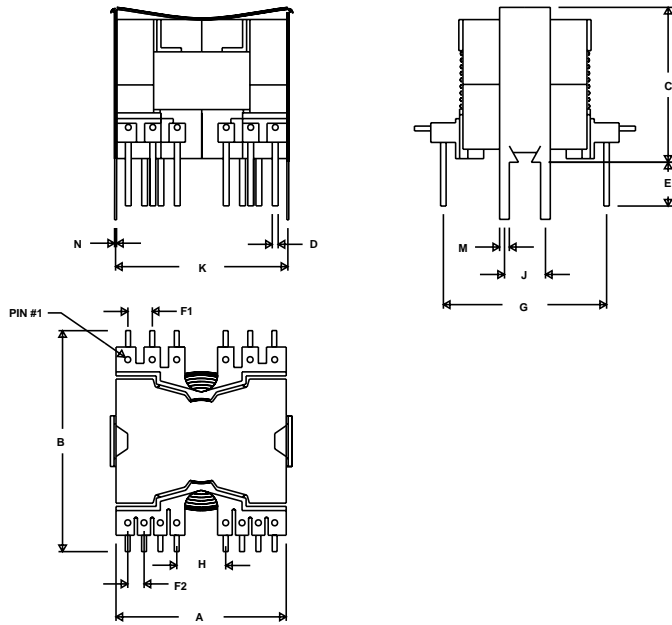


Figure 2:

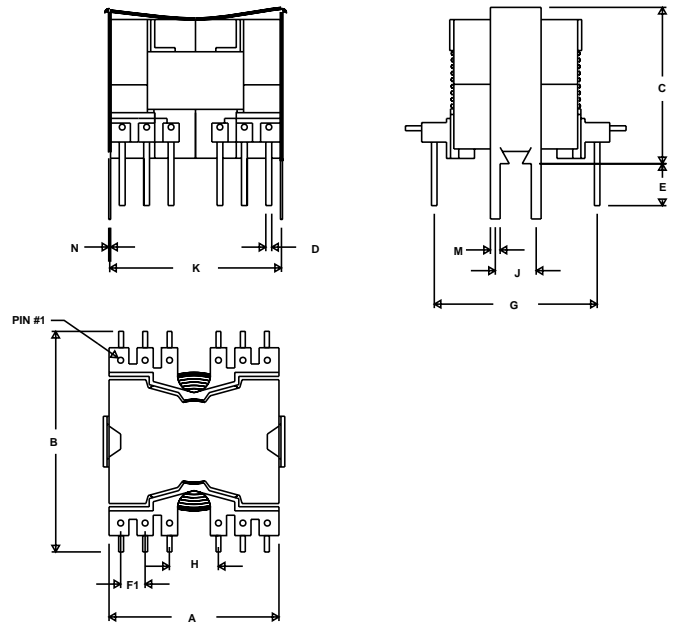


Figure 3:

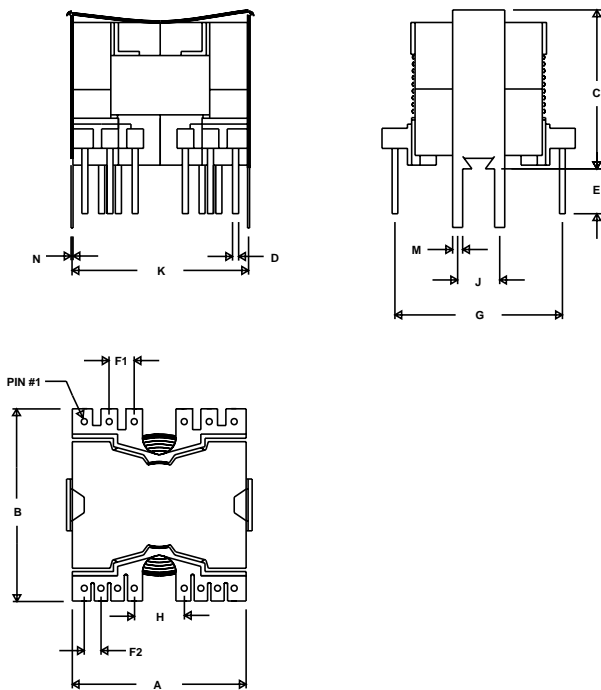
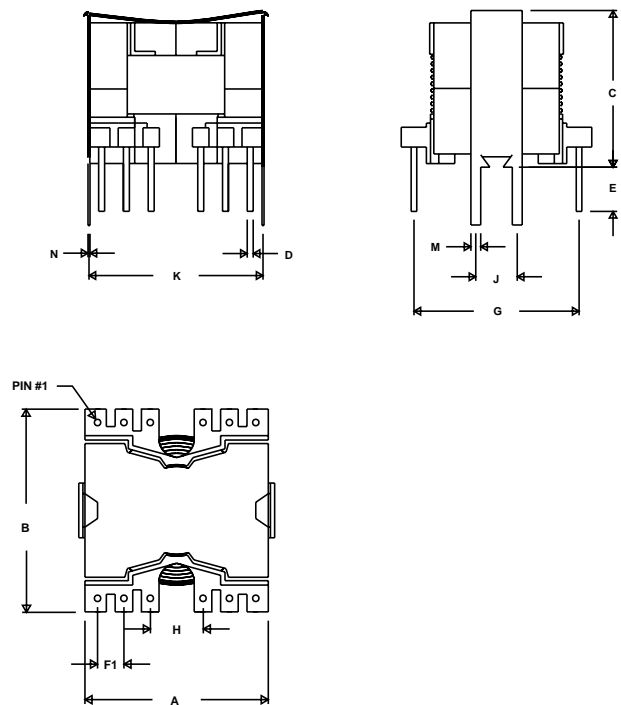


Figure 4:



Pin numbering is clockwise looking at bottom view of component.

PQ Power Switchmode Transformers

Precision Model #	Figure #		A MAX	B MAX	C MAX	D DIA MAX	E MIN	F1 NOM	F2 NOM	G NOM	H NOM	J NOM	K NOM	M NOM	N NOM
PQSP2016	1	mm	23.20	30.20	21.10	0.90	2.50	3.81	2.54	20.30	5.08	6.40	20.80	1.50	0.305
		in	0.913	1.189	0.831	0.035	0.098	0.150	0.100	0.800	0.200	0.252	0.820	0.059	0.012
PQSP2020	1	mm	23.20	30.20	25.10	0.90	2.50	3.81	2.54	20.30	5.08	6.40	20.80	1.50	0.305
		in	0.913	1.189	0.988	0.035	0.098	0.150	0.100	0.800	0.200	0.252	0.820	0.059	0.012
PQSP2620	2	mm	26.70	36.50	25.50	1.06	2.50	3.81	—	25.40	7.62	9.00	26.80	1.50	0.305
		in	1.051	1.437	1.004	0.042	0.098	0.150	—	1.00	0.300	0.354	1.06	0.059	0.012
PQSP2625	2	mm	26.70	36.50	30.10	1.06	2.50	3.81	—	25.40	7.62	9.00	26.80	1.50	0.305
		in	1.051	1.437	1.185	0.042	0.098	0.150	—	1.00	0.300	0.354	1.06	0.059	0.012
PQSP3220	2	mm	32.20	41.90	26.20	1.11	2.50	5.08	—	30.50	7.62	10.60	32.40	1.70	0.432
		in	1.268	1.650	1.031	0.044	0.098	0.200	—	1.20	0.300	0.417	1.28	0.067	0.017
PQSP3230	2	mm	32.20	41.90	36.00	1.11	2.50	5.08	—	30.50	7.62	10.60	32.40	1.70	0.432
		in	1.268	1.650	1.417	0.044	0.098	0.200	—	1.20	0.300	0.417	1.28	0.067	0.017
PQSP3535	2	mm	35.10	43.10	40.30	1.06	2.50	5.08	—	35.60	10.20	11.30	35.50	1.70	0.432
		in	1.382	1.697	1.587	0.042	0.098	0.200	—	1.40	0.400	0.445	1.40	0.067	0.017
PQSP4040	2	mm	40.10	45.60	45.10	1.06	2.50	5.08	—	38.10	15.20	11.80	40.90	1.70	0.432
		in	1.579	1.795	1.776	0.042	0.098	0.200	—	1.50	0.600	0.464	1.61	0.067	0.017

Precision Model #	Figure #		A MAX	B MAX	C MAX	D DIA MAX	E MIN	F1 NOM	F2 NOM	G NOM	H NOM	J NOM	K NOM	M NOM	N NOM
PQ2016	3	mm	23.20	23.40	21.10	0.90	2.50	3.81	2.54	20.30	5.08	6.40	20.8	1.50	0.305
		in	0.913	0.921	0.831	0.035	0.098	0.150	0.100	0.800	0.200	0.252	0.820	0.059	0.012
PQ2020	3	mm	23.20	23.40	25.10	0.90	2.50	3.81	2.54	20.30	5.08	6.40	20.8	1.50	0.305
		in	0.913	0.921	0.988	0.035	0.098	0.150	0.100	0.800	0.200	0.252	0.820	0.059	0.012
PQ2620	4	mm	26.70	29.80	25.50	1.06	2.50	3.81	—	25.40	7.62	9.00	26.80	1.50	0.305
		in	1.051	1.173	1.004	0.042	0.098	0.150	—	1.00	0.300	0.354	1.06	0.059	0.012
PQ2625	4	mm	26.70	29.80	30.10	1.06	2.50	3.81	—	25.40	7.62	9.00	26.80	1.50	0.305
		in	1.051	1.173	1.185	0.042	0.098	0.150	—	1.00	0.300	0.354	1.06	0.059	0.012
PQ3220	4	mm	32.20	34.30	26.20	1.11	2.50	5.08	—	30.50	7.62	10.60	32.40	1.70	0.432
		in	1.268	1.350	1.031	0.044	0.098	0.200	—	1.20	0.300	0.417	1.28	0.067	0.017
PQ3230	4	mm	32.20	34.30	36.00	1.11	2.50	5.08	—	30.50	7.62	10.60	32.40	1.70	0.432
		in	1.268	1.350	1.417	0.044	0.098	0.200	—	1.20	0.300	0.417	1.28	0.067	0.017
PQ3535	4	mm	35.10	39.70	40.30	1.06	2.50	5.08	—	35.60	10.20	11.30	35.50	1.70	0.432
		in	1.382	1.563	1.587	0.042	0.098	0.200	—	1.40	0.400	0.445	1.40	0.067	0.017
PQ4040	4	mm	40.10	42.10	45.10	1.06	2.50	5.08	—	38.10	15.20	11.80	40.90	1.70	0.432
		in	1.579	1.657	1.776	0.042	0.098	0.200	—	1.50	0.600	0.464	1.61	0.067	0.017

Next step: Talk to us!

Now that you've selected a Precision product for your application, it's time to talk to the Precision team about fine-tuning our product to fit your application needs.

Click here to choose a contact on the web or call 1-800-749-3677.