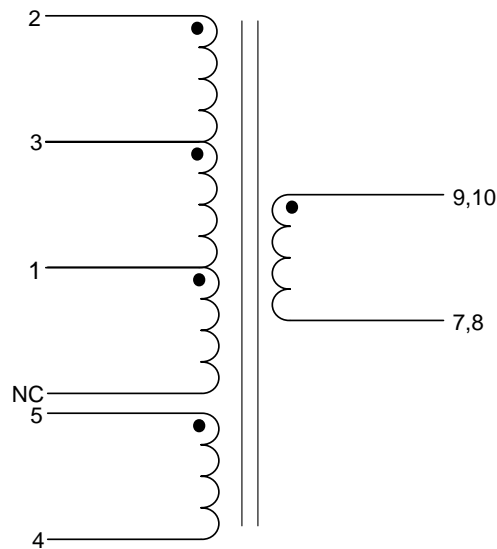


- EP-93 Transformer
- Output Voltage: 30V, 10.7A (2.7A Peak)
- Universal Input Supply
- 6mm (min) creepage between pins 1-5 and 6-10

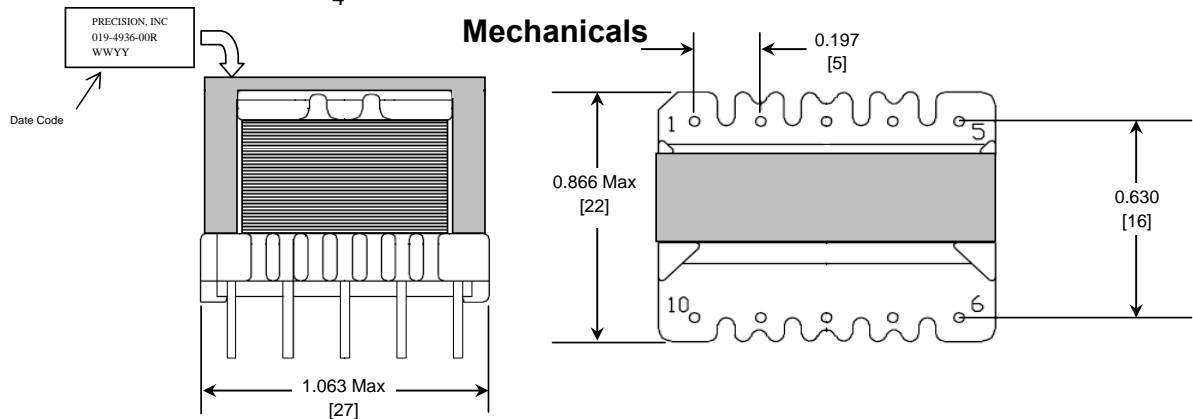
Electrical Specifications at +20°C unless noted otherwise

Parameters	Value	Notes
Inductance (μH)	132 ± 10%	(1-2) @ 100 KHz, 0.4V
Leakage Inductance (μH)	5.5 Max	(1-2), short (4+5+7+8+9+10) @ 100 KHz, 0.4V
DCR (mΩ)	26 Max	(1-2)
DCR (mΩ)	33 Max	(5-4)
DCR (mΩ)	2.1 Max	(9,10 - 7,8)
HIPOT (VAC)	3000	(1-5) - (6-10) @ 60 Hz for 1s

Schematics



Mechanicals



Specifications subject to change without notice.
 Dimensions are in inches, metric in [].
 Pin 1 indicated by dot on label or part.
 Label shown is only for illustrative purposes only.

